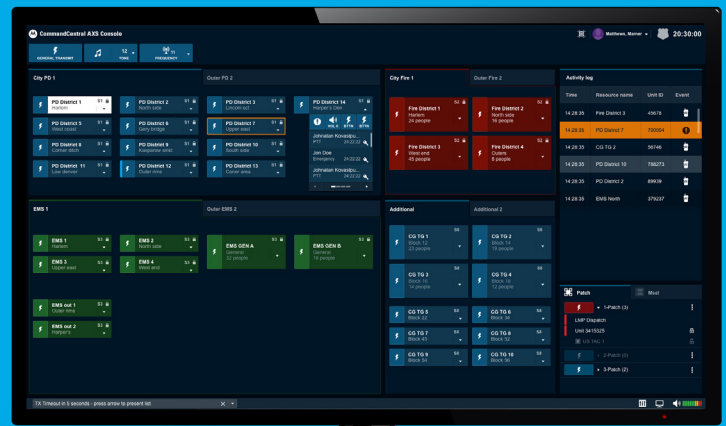


# COMMANDCENTRAL AXS CONSOLE

## DISPATCH FOR THE MODERN WORLD



CommandCentral Hub

As a dispatcher, when every second counts, it's your job to provide crucial intelligence to personnel and to keep people safe. Yet in today's world, you have more information, resources and tools competing for your attention than ever.

Precious time is lost if you have to switch between folders and elements across multiple screens to collect and process data from disparate sources. That's why we created the CommandCentral AXS Console. Based on extensive observation of the way dispatchers work, it has been thoughtfully designed to help you confidently and efficiently manage any situation that comes your way.

You can rest assured that the investment you're making will return value over the entire life of your system. CommandCentral AXS is designed from the ground up to be a completely extensible platform. Plus, simplified software releases continuously add new functionality, improve performance, and provide the necessary security updates, making CommandCentral AXS even more future ready.

With a resource-centric design and the flexibility to interact by touch, type or click, you can stay connected to your team in the way that suits you best. Configure and deploy CommandCentral AXS based on your needs – not ours – and know it can grow with your organization for years to come. Whether you're supporting a small agency or an entire state, you can count on the mission-critical reliability that has made Motorola Solutions the most trusted name in dispatch communications for over 80 years.

### FEATURES



**MISSION-CRITICAL DISPATCHING**  
80+ years innovation and reliability



**NEXT GENERATION DISPATCH EXPERIENCE**  
Works the way you do



**SIMPLIFIED SOFTWARE UPGRADES**  
Continuously improved, less disruptive updates

### PROACTIVE AND REGULAR SOFTWARE UPDATES

Ensure your consoles are performing at their highest functionality and level of security with your CommandCentral AXS maintenance and support plan. The AXS maintenance and support plan provides ongoing feature enhancements, security updates and technical support. An active maintenance and support plan is required for all AXS voice dispatch consoles during the first year. Additional years of support can be purchased, ensuring your teams always have access to new features, critical security patches, troubleshooting tools and technical support.



## RADIO RESOURCE FEATURES

Types of Resources	ASTRO 25 Trunking Talk Group Resource
	ASTRO 25 Trunking Announcement Group Resource
	ASTRO 25 Trunking Individual Resource
	ASTRO 25 Trunking System Wide Resource
	Simple Analog Conventional Resource
	MDC1200 Analog Conventional Resource
	ASTRO 25 Conventional Resource

Type of Calls	ASTRO 25 Trunking Talk Group Call
	ASTRO 25 Trunking Announcement Group Call
	ASTRO 25 Trunking Emergency Call
	ASTRO 25 Trunking Individual Call
	ASTRO 25 Trunking System Wide Call
	Conventional PTT Call
	Conventional ASTRO 25 Emergency Call
	Conventional MDC 1200 Emergency Call
	Conventional ASTRO 25 Voice Selective Call
	Conventional MDC 1200 Voice Selective Call

Resource Controls	Individual Resource Volume Control
	Repeat Control (trunking and conventional)
	Transmit Mode Control (Coded / Clear) (trunking and conventional)
	System Access Priority Select (Normal / Tactical) (trunking)
	Frequency Selection Control (conventional)
	PL Selection Control (conventional)
	Wildcard I and II Control (conventional)
	Mute Receiver 2 Control (conventional)
	Emergency Alarm (conventional)
	Radio Status (trunking and conventional)
	Radio Message (conventional)
	Radio Enable / Disable (conventional)
	Radio Check (conventional)
	Remote Monitor (trunking and conventional)

## AUXILIARY INPUTS AND OUTPUTS

Public Aux I/Os	Public Momentary Relay
	Public Latching Relay
	Public Interlocked Latching Relay
	Public Momentary Input
	Public Latching Input

Private Aux I/Os	Private Relay for Dispatch Console PTT
	Private Relay for Received Emergency
	Private Relay for Received Call on Selected Channel
	Private Relay Closure when Global Aux I/O goes Active (for external Sonalert)

## SECURE VOICE SERVICES

Algorithms	AES, DES-OFB and ADP Algorithms
Dispatcher User Controls	Secure Mode Selection (coded / clear)
	Panic Key Zeroizing
	Key Select (conventional)
	Multikey (conventional)
	Momentary Key Override (conventional)
	Keyset / Indexset Selection
Dispatcher User Indications	Receive Cross-Mode Indication
	Multi-Select Cross-Mode Alert
	Patch Cross-Mode Alert
	Key Fail Indication
	Clear Audio Alert
	Key Display (conventional)
Key Management	Key Management via Key Variable Loader
	Key Management via Over The Ethernet Keying (OTEK)

## SUPPORTED BROWSERS

Supported Browsers	Most Current Version of Chromium or Chrome
--------------------	--

## GENERAL CONSOLE FUNCTIONALITY

Console Functionality	General Transmit
	Instant Transmit
	APB Transmit
	Monitor (disable CTCSS)
	Single Select
	Multi-Select (up to 16 groups per dispatch position)
	On-Screen Speaker Volume Controls
	All Mute
	Acoustic Cross Mute
	Patch (up to 16 groups per dispatch position)
	Display Radio PTT ID with Alias
	Emergency Alarm
	Call Alert
	Time Display
	VU Meter
	Activity Log
	Channel Based Instant Recall Recorder
	Integrated Paging Encoder
	Customizable Channel Marker
Alert Tones (up to 15 per dispatch position, all customizable)	
Group Text Messaging (trunking)	

COMMANDCENTRAL HUB	
Dimensions (H x W x D)	<p><b>Without cable strain relief bracket:</b> 3.5 x 17.0 x 7.2 inches 88 x 431.5 x 183 mm</p> <p><b>With cable strain relief bracket:</b> 3.5 x 17.0 x 10.4 inches 88 x 431.5 x 263 mm</p>
Weight	13 lbs 5.9 kg
Power Consumption	170 W typical 260 W maximum
Thermal Output	580 BTU/hr typical 887 BTU/hr maximum
Operating Voltages/ Frequencies	120 VAC at 60 Hz 240 VAC at 60 Hz 120 VAC at 50 Hz 240 VAC at 50 Hz
Operating Environment	32 to 104° F at 90% RH maximum non-condensing 0 to +40° C at 90% RH non-condensing
Storage Environment	-4 to 140° F at 90% RH maximum non-condensing -25 to +70° C at 90% RH non-condensing
Certifications	<p><b>Safety</b> UL/CSA 60950 (UL/CSA safety) UL/CSA 62369 with CB scheme (UL/CSA safety) EN62368-1 2014 (CE safety) Motorola Solutions R56 grounding requirements</p> <p><b>EMC Emissions &amp; Immunity</b> FCC part 15 Class A (US emissions for unintentional radiators) ICES-003 (Canadian emissions) EN55032 2012 (CE emissions for telecom equipment) EN55035 2017 (CE immunity for telecom equipment) EN61000-3-2 2014 (CE power line harmonics) EN61000-3-3 2013 (CE voltage fluctuations and flicker)</p> <p><b>Environmental</b> Restriction of Hazardous Substances (RoHS) per directive 2011/65/EU and amendment 2015/863 of the European Parliament Waste Electrical and Electronics Equipment (WEEE) per directive 2012/19/EU of the European Parliament IEC 60529 rating of IP20 (Intrusion resistance to objects greater than 12.5 mm and no liquid resistance)</p> <p><b>Energy Efficiency</b> Energy Efficiency Level VI</p>

COMMANDCENTRAL AXS ACCESSORIES	
Devices	CommandCentral Hub
	Up to 10 Speakers
	Up to 2 Headset Jacks
	1 Desk Microphone
	1 Footswitch
	1 External Paging Encoder Port
	1 Telephone / Headset Port
	3 Local Logging Ports

COMMANDCENTRAL AXS CLUSTER	
Servers per Cluster	3
Dimensions* (H x W x D) (per server)	1.70 x 17.11 x 24.01 inches 42.9 x 434.6 x 614.9 mm
Weight (per server)	25.69 lbs 11.65 kg
Power Consumption (per server)	557 Watts (input maximum) 550 Watts (input typical)
Thermal Output (per server)	1,979 BTU/Hr (maximum) 1,911 BTU/Hr (typical)
Operating Environment*	10° to 35°C (50° to 95°F) at sea level with an altitude derating of 1.0°C per every 305 m (1.8°F per every 1000 ft) above sea level to a maximum of 3050 m (10,000 ft), no direct sustained sunlight. Maximum rate of change is 20°C/hr (36°F/hr). The upper limit and rate of change may be limited by the type and number of options installed.  8% to 90% - Relative humidity (Rh), 28°C maximum wet bulb temperature, non-condensing.
Storage Environment*	-30°C to 60°C (-22°F to 140°F) Maximum rate of change is 20°C/hr (36°F/hr).  5 to 95% relative humidity (Rh), 38.7°C (101.7°F) maximum wet bulb temperature, non-condensing.

\*Measurements are approximate and will vary with configuration and model

For more information or to learn more please visit [www.motorolasolutions.com/commandcentralaxs](http://www.motorolasolutions.com/commandcentralaxs)



Motorola Solutions, Inc. 500 West Monroe Street, Chicago, IL 60661 U.S.A. [motorolasolutions.com](http://motorolasolutions.com)

MOTOROLA, MOTO, MOTOROLA SOLUTIONS and the Stylized M Logo are trademarks or registered trademarks of Motorola Trademark Holdings, LLC and are used under license. All other trademarks are the property of their respective owners. © 2022 Motorola Solutions, Inc. All rights reserved. 12-2022 [MW06]